

# **Operating Instructions**

## **3DWeb**

Version

June 2010

## **Introduction**

3DWeb is an abbreviated browser version of 3DISS that enables the operator to view data and configuration of various data loggers connected to the 3DISS network. The operator can also print simple reports and graphs from 3DWeb. However the operator cannot configure or change any of the parameters. These must be completed using 3DISS software.

See Installation manual for the procedure to install 3DWeb.

Note: 3DISS Server version must be running to enable 3DWeb to display the most current data. If 3DISS is offline, 3DWeb will still operate but only display the last updated data.

## 1. Logon

Open Windows Internet Explorer and enter the default website address for 3Dweb on your system. This may be set up by your IT administrator as a short cut on your desktop or favourite in Windows IE.

Logon User Name and Password are the same as for 3DISS software. Contact your IT administrator for these.



Once the user has logged on to 3Dweb, the Real time Display Summary screen will appear. See below.

## 2. Real time Displays – Summary

If 3DISS is not running, Real Time Display will show last updated value.



When a channel is in alarm state the Real Time Display initially shows the temperature with an orange band and the words “Alarm Delay”.



If the channel remains in alarm past the preset alarm delay period, the colour band will change to red and the words “Alarm High” or in the case of the low alarm set point, the words “Alarm Low” will be displayed.



You can acknowledge the alarm by moving the cursor over and left clicking on the red colour band. An orange box will be displayed that requires you to log on and enter the cause of the alarm. Press OK. This information will be stored in the database and be added to the Audit report (see section 7)



Once you have entered your logon details and Alarm cause, the Real time Display will show “Alarm Ack” with an orange band in the channel box.



### 3. Real time Displays – Comprehensive

The Comprehensive Real time Display gives the operator more information about door alarms and displays this along with temperature and channel information in a spreadsheet fashion. See below.

Current Date Time	Channel Name	Reading	Alarm State	Door State	Door Alarm State
3/06/2010 4:39:00 p.m.	Pharmacy	15.00	DELAY	N/A	N/A
3/06/2010 4:39:00 p.m.	Blood Bank	22.80	OK	N/A	N/A
3/06/2010 4:39:00 p.m.	Theatre	22.00	OK	N/A	N/A
3/06/2010 4:39:00 p.m.	Laborator	22.10	OK	N/A	N/A

### 4. Administration

When viewing the Administration tab, the operator can select to view Channel, Unit or Users settings. Note: these can only be viewed. Changing the configuration of any of the displayed settings or parameters must be carried out within the 3DISS software.

Place the cursor over the Administration tab and select from the drop down menu.

Chn No	Enabled	Name	High Alarm Value	Low Alarm Value	Alarm Delay	Alarm Repeat	Sensor Type	Eng Units	Eng High Value (mA)	Eng Low Value (mA)	Digital Input	Door Alarm Delay	Door Alarm Repeat	Door Alarm Trigger
1	YES	Pharmacy	25.00	-15.00	1 Minute	OFF	PT100	°C	0	0	Ignore	N/A	OFF	CLOSED
2	YES	Blood Bank	200.00	-100.00	1 Minute	OFF	PT100	°C	0	0	Ignore	N/A	OFF	CLOSED
3	YES	Theatre	200.00	-100.00	1 Minute	OFF	PT100	°C	0	0	Ignore	N/A	OFF	CLOSED
4	YES	Laborator	200.00	-100.00	1 Minute	OFF	PT100	°C	0	0	Ignore	N/A	OFF	CLOSED

Channels Page

Unit Name	Unit Type	Rom Version	No Of Chns	Temperature Unit	Log Rate	Alarm Relay	Alarm Buzzer	Door Relay	Door Buzzer	Alarm Latching
Butler Hospital	TL4	1.1	4	Celsius	10					OFF

Units Page



Users Page

## 5. Reports

By selecting the “Reports” tab, the operator can print reports from the available channels.



Select the required channels you wish to view by ticking the appropriate boxes. You can select all the channels by clicking on “Select All Channels” and remove by clicking on “Remove All Channels”.

Then select the date or week you are interested in viewing by clicking on the date or ≥ symbol for the week. The area will be highlighted in blue.

Select the “Load Reading Report”, “Load Event Report”, “Summary By Channel” or “Summary By Date” and the corresponding report will be displayed at the bottom of the screen.

7/06/2010 3D Digital Design & Development Ltd				
Reading Report				
Date/Time	Pharmacy	Blood Ban	Theatre	Laborator
1/06/2010 11:55:00p.m.	18.40	18.70	19.10	19.10
1/06/2010 11:45:00p.m.	18.40	18.70	19.10	19.10
1/06/2010 11:35:00p.m.	18.40	18.80	19.10	19.10
1/06/2010 11:25:00p.m.	18.40	18.80	19.10	19.10
1/06/2010 11:15:00p.m.	18.50	18.90	19.20	19.20
1/06/2010 11:05:00p.m.	18.50	18.90	19.30	19.20
1/06/2010 10:55:00p.m.	18.50	19.00	19.30	19.30
1/06/2010 10:45:00p.m.	18.50	19.00	19.30	19.40
1/06/2010 10:35:00p.m.	18.50	19.10	19.40	19.40
1/06/2010 10:25:00p.m.	18.70	19.10	19.50	19.50
1/06/2010 10:15:00p.m.	18.70	19.20	19.50	19.50
1/06/2010 10:05:00p.m.	19.70	19.20	19.50	19.60
1/06/2010 9:55:00p.m.	18.80	19.30	19.60	19.60
1/06/2010 9:45:00p.m.	18.90	19.30	19.60	19.70

**Reading Report**

7/06/2010 3D Digital Design & Development Ltd			
Event Report			
Date/Time	Reading	Event	Dist Event
Pharmacy			
1/06/2010 1:41:00p.m.	23.30	Reading OK / DELAY	
1/06/2010 1:37:00p.m.	27.80	Alarm Ack	
1/06/2010 1:36:00p.m.	27.60	High Alarm	

**Event Report**

7/06/2010 3D Digital Design & Development Ltd			
Summary Report			
Date/Time	Maximum	Minimum	Average
Pharmacy			
01-June-2010	27.90	17.30	18.88
Total	27.90	17.30	18.88
Blood Ban			
01-June-2010	21.80	17.40	19.08
Total	21.80	17.40	19.08
Theatre			
01-June-2010	21.60	17.90	19.42
Total	21.60	17.90	19.42
Laborator			
01-June-2010	21.80	17.90	19.47
Total	21.80	17.90	19.47

**Summary By Channel Report**

8/06/2010 3D Digital Design & Development Ltd			
Summary Report			
Channel Name	Maximum	Minimum	Average
08-June-2010			
Pharmacy	18.50	16.60	17.28
Blood Ban	18.20	16.80	17.42
Theatre	18.40	17.50	17.68
Laborator	18.40	17.50	17.68

**Summary By Date Report**

You can print or save these reports by selecting the “Print Report” button. A PDF file will be created which can either be opened and printed or saved.

The same report can be saved or exported in either PDF, Excel, Rich Text or Word format by selecting the “Export Report” button.



## 6. Graphs

The operator can view and print out a graph from the data collected. The graphs window displays the calendar on the left and the available channels on the right hand side.

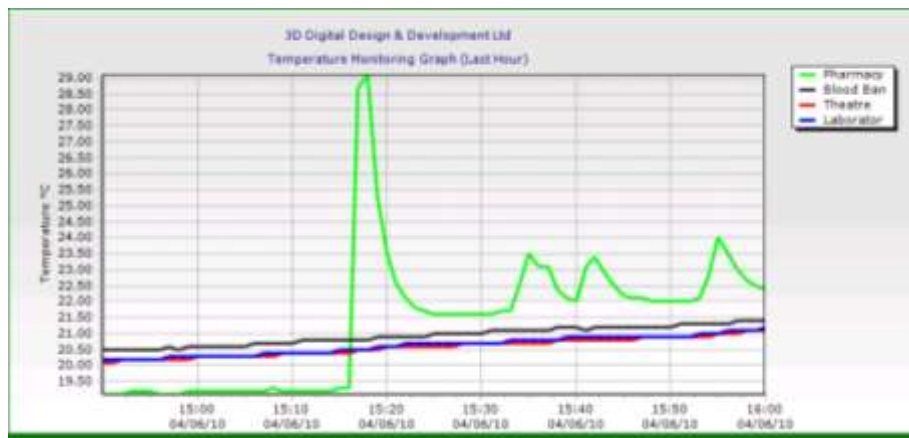


Select the required channels you wish to view by ticking the appropriate box. You can select all the channels by clicking on “Select All Channels” and remove by clicking on “Remove All Channels”.

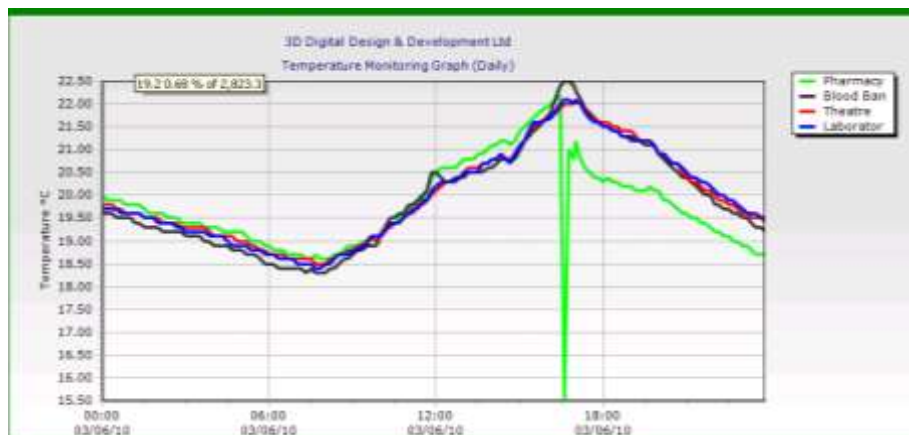
Then select the date or week you are interested in viewing by clicking on the date or  $\geq$  symbol for the week. The area will be highlighted in blue.

Next either select “Last Hour Graph” or “Daily Graph”. The appropriate graph will be displayed at the bottom of the page.

By left clicking and holding the mouse cursor over an area of interest, then forming a box, the operator can zoom into the graph.



Last Hour Graph



Daily Graph

Graphs can be printed by clicking on "Print Page".

## 7. Audit Trail

The operator can create a daily or weekly Audit Report.

3D Digital Design & Development Ltd  
Wireless, Internet, Ethernet & GPS Temperature Monitoring > more

Administration Realtime Displays Reports Graphs Audit Trail Comments

Audit Trail

Click to Select Date Click on > to Select a Week

May	June 2010							July
>	Mon	Tue	Wed	Thu	Fri	Sat	Sun	>
>	31	1	2	3	4	5	6	>
>	7	8	9	10	11	12	13	>
>	14	15	16	17	18	19	20	>
>	21	22	23	24	25	26	27	>
>	28	29	30	1	2	3	4	>
>	5	6	7	8	9	10	11	>

Load Audit Report

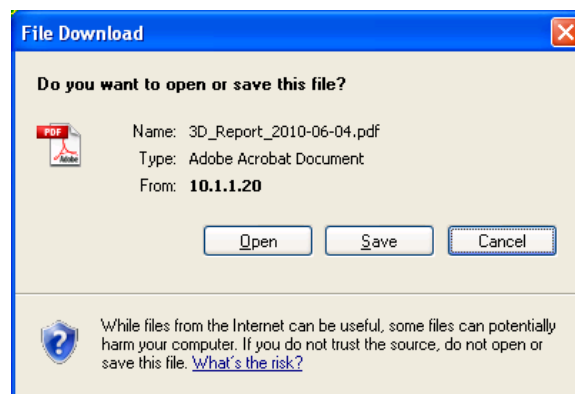
Export Report Print Report

PDF

Simply click on the required date or week by using the appropriate  $\geq$  symbol which appears to the left of each week. Next select "Load Audit Report". Scroll down to the bottom of the page and an Audit Report will be listed on screen.

Date/Time	Description	Channel Name	Comment	Audit Report	Corrective Action User	Corrective Action	Username
4/06/2010							
4/06/2010							
15:27	User log in						Daryl
15:27	User log-out						Daryl
15:25	Alarm acknowledged		Warnings Cleared By User				Daryl
15:21	User log in						Daryl
15:21	User log-out						System Admin
13:48	Alarm acknowledged		Warnings Cleared By User				System Admin
13:08	User log in						System Admin

You can print or save this report by selecting the "Print Report" button. A PDF file will be created which can either be opened and printed or saved.



By selecting "Open" the report will be displayed as below.

Date/Time	Description	Channel Name	Comment	Audit Report	Corrective Action User	Corrective Action	Username
4/06/2010							
4/06/2010							
15:27	User log in						Daryl
15:27	User log-out						Daryl
15:25	Alarm acknowledged		Warnings Cleared By User				Daryl
15:21	User log in						Daryl
15:21	User log-out						System Admin
13:48	Alarm acknowledged		Warnings Cleared By User				System Admin
13:08	User log in						System Admin
2/06/2010							
17:05	User log-out						System Admin
16:55	Alarm acknowledged	Pharmacy	Caution test				System Admin
16:30	Channel details set	Pharmacy	Channel Alarm Low Value changed from -100 to 15.00				System Admin
16:30	Send email changes to unit						System Admin
16:29	View Administration screen						System Admin
16:03	User log in						System Admin
2/06/2010							
12:15	User log-out						Daryl
12:05	Alarm acknowledged		Warnings Cleared By User				Daryl
12:02	Alarm acknowledged	Pharmacy	(Speech/Client) Alarm Ack				Daryl
12:01	Alarm acknowledged	Pharmacy	Caution test				Daryl
12:14	User log in						Daryl

The same report can be saved or exported in either PDF, Excel, Rich Text or Word format by selecting the “Export Report” button.

## **8. Comments**

All comments, suggestions and problems with 3DWeb may be directed to 3D using the comments field.